



# HIRE

FAST. FLEXIBLE. RELIABLE.



# FAST. FLEXIBLE. RELIABLE.

Ausco Modular is one of the largest modular building companies in Australia delivering a fast, flexible and reliable service to clients nationally. Regardless of size, complexity, location or duration of hire, we have the buildings and the expertise to satisfy the needs of any project.

## OUR RANGE

Our hire fleet holds a wide variety of buildings in various sizes and layouts as well as accessory items and value added products to complete the package. Our range includes:

- > Project and site offices
- > Toilets and ablutions
- > Lunchrooms
- > Classrooms and learning centres
- > Accommodation
- > Kitchens and dining facilities
- > First aid facilities

## LOCAL SERVICE

Each branch holds a wide range of hire buildings and ancillaries suitable for local businesses, which guarantees a rapid response to customer enquiries. Choose from a standard range of buildings or customise the look and layout to suit your needs.

Providing a full turnkey solution, we offer a range of services to establish your site and ensure continued support for the duration of the project.

## NATIONAL SUPPORT

When engaging with us you are choosing to work with a national leader and a member of the Algeco Scotsman group - the world's largest provider of modular space and secure storage. With operations and affiliates in 37 countries, Algeco Scotsman's global scale and local market expertise enables us to provide exceptional value to all customers.

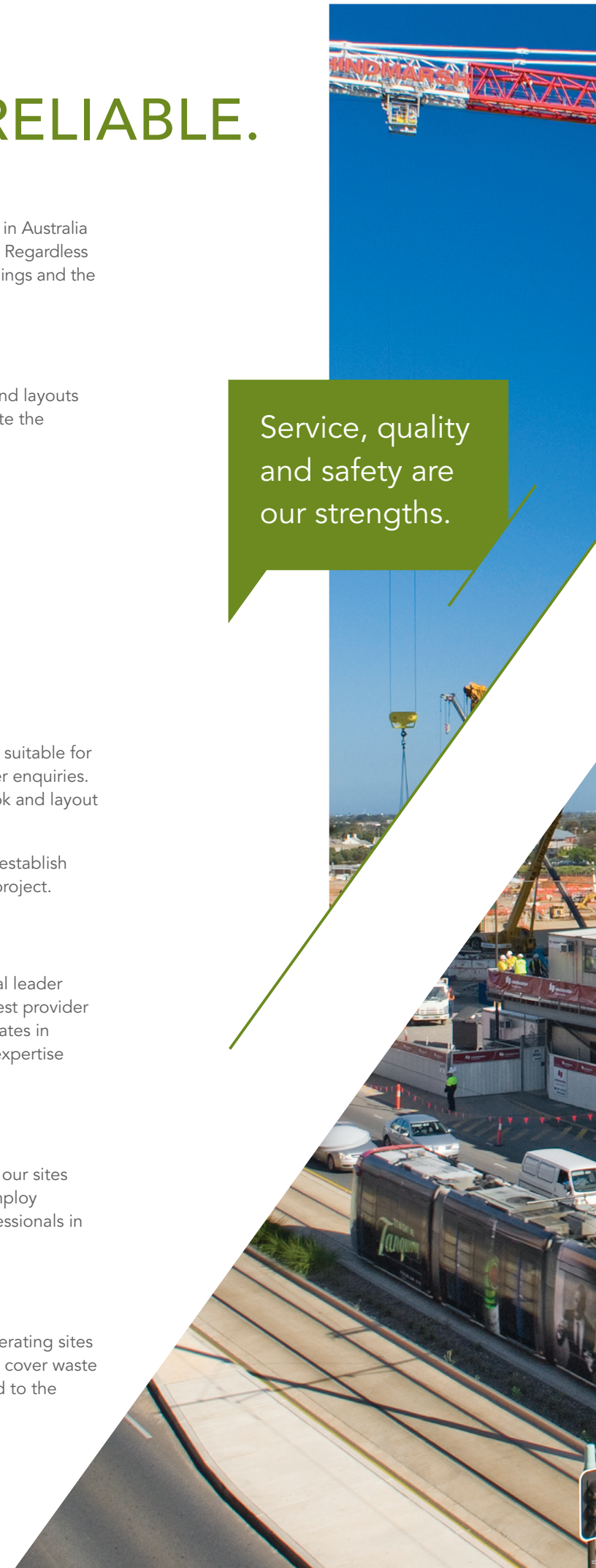
## OUR SAFETY CULTURE

Our approach to health and safety includes the accreditation of our sites to the Australian Standard in Health and Safety, AS4801. We employ dedicated Health and Safety managers to support our line professionals in controlling and improving health and safety performance.

## OUR ENVIRONMENT

Ausco Modular has environmental management plans for its operating sites which include waste, water and energy management. Our plans cover waste reduction, recycling and disposal. Our major sites are accredited to the Australian Environment standard ISO14001.

Service, quality and safety are our strengths.







## TURNKEY HIRE

Ausco Modular's turnkey hire packages make the process easy. We provide a full suite of services:

- > Project management
- > Design
- > Planning
- > Civil site works
- > Installation
- > Transport
- > Electrical and data installation
- > Ongoing support and maintenance
- > Ancillaries
- > Full demobilization service

We can evaluate your site and recommend a range of options as well as other products and services such as walkways, waste tanks and landscaping to provide true turnkey hire. Supply and installation of all our buildings is completed to the appropriate standards and building codes.

When you no longer need the buildings, a full service to remove and return the buildings is available.

Our people, policies and safe working procedures are all aimed at providing you with a professional experience, second to none in the industry.

We make it easy, with a full turnkey process from start to finish. All you need to do is move in.

# THREE RANGES TO CHOOSE FROM

To meet the diverse needs of multiple industries, we have three types of hire buildings, **Standard**, **Commercial** and **Education**.

The standard range offers the best in quality, durability and cost.

While the commercial range has the same qualities of the standard range, there is an extra focus on aesthetics and comfort, especially designed for a commercial office environment.



## STANDARD

The standard range offers the best in quality, durability and cost.

- > Project offices
- > Construction site facilities
- > Kitchen and lunchrooms
- > Living accommodation
- > Toilets and ablutions
- > Chemical toilets and tanks

## COMMERCIAL

Commercial range for professional office space.

- > Commercial offices
- > Sales offices
- > Lunchrooms
- > Toilets
- > Training facilities

## EDUCATION

Education range.

- > Classrooms
- > Multi-purpose

# ADD-ON PRODUCTS AND SERVICES

In addition to our buildings, we provide a range of add-on products and services, so your temporary space will arrive ready for business.

## SERVICES

From planning to transport and installation, we provide all the services you need to move in.

- > Project management
- > Transport
- > Site preparation and installation
- > Demobilisation
- > Building fit-outs
- > On-site relocations
- > Pump-out services
- > Site service calls

## ANCILLARIES

Our hire buildings can be fitted out or furnished with ancillary items so you have everything you need as soon as the buildings arrive.

- > Desks and chairs
- > Bookshelves and filing cabinets
- > Commercial office furniture
- > Mini-boils
- > Fridges
- > Air-conditioning units
- > Water tanks
- > Waste tanks
- > Lockers
- > Site service calls

## OPTIONAL EXTRAS

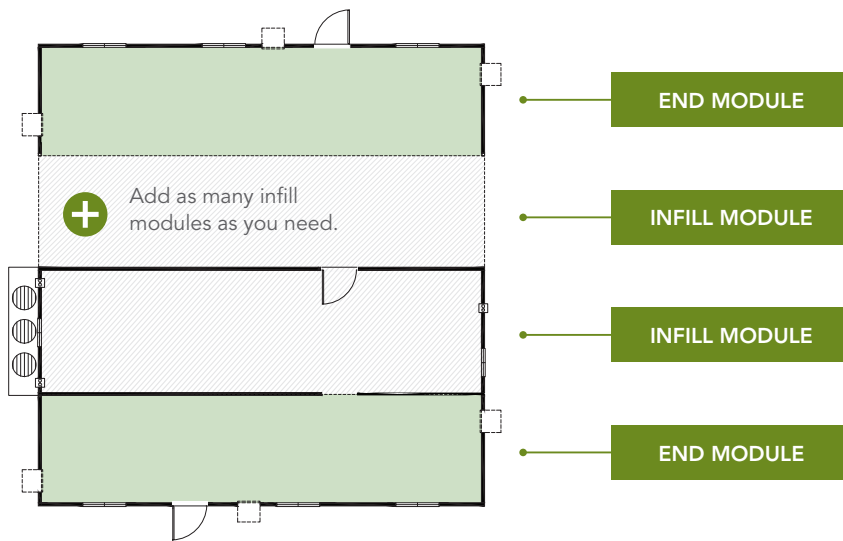
We offer a range of other extras to complete your site establishment from landscaping to carpets.

- > Carparks
- > Landscaping
- > Concrete paths
- > Covered walkways
- > Steps, landings and decks
- > Carpet
- > Data and electrical services
- > Storage containers
- > Other infrastructure

# OUR HIRE BUILDINGS

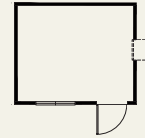
Our modular designs have the ability to expand to any size, simply start with two end modules and add as many infill modules up to the size required. Internally, the buildings are designed to work as clear open plan spaces with airy interiors.

Each branch holds a range of buildings suitable for the local market, which allows for a rapid response to customer enquiries.

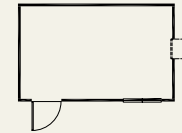


Our fleet includes numerous sizes with building widths between 2.4m and 3.5m and lengths of:

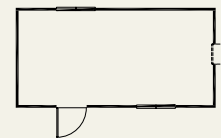
> 3.6m



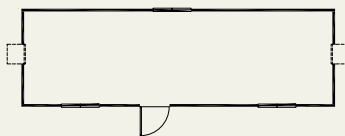
> 4.8m



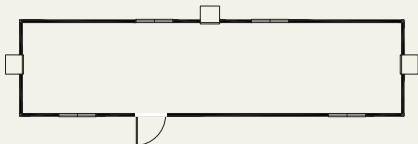
> 6.0m



> 9.6m



> 12.0m



Local fleet sizes may vary due to customer demand.

## ANCILLARIES

Our hire buildings can be fitted out or furnished with ancillary items so you have everything you need as soon as the buildings arrive. We aim to make the process as easy as possible and stock a large range of popular items.

### Ancillaries include

- > Desks and chairs
- > Bookshelves and filing cabinets
- > Mini-boils
- > Fridges
- > Air-conditioning units
- > Water tanks
- > Waste tanks

Local ancillaries may vary due to customer demand.





Get the full picture. Commercial office complexes, complete with covered walkways, carpark, landscaping and more.



## COMMERCIAL OFFICES

Our commercial range of offices are built with a focus on aesthetics and comfort to provide an appealing, clean and safe environment.

Our modular designs can be adapted to accommodate your individual requirements. With a focus on building functionality and structural integrity, we can provide a full turnkey solution with all the extra products and services in one package, such as carpet, furniture, data, electrical, covered walkways, steps, landings, landscaping, carparks, on site maintenance and more.



Our friendly team ensures your buildings are delivered to the highest quality. We offer a range of services to maintain quality of your buildings whilst on site.

With experienced local installation teams, we have the capability to deliver every time, everywhere.



## PROJECT AND SITE OFFICES

We take pride in providing workable, safe and efficient office solutions for our clients. Project offices, construction offices and our premium commercial offices come in many sizes and configurations, enabling us to provide buildings to your specifications. Single storey, multi-storey, remote locations and in busy city centres we have a transportable modular solution to meet your needs.



These buildings can be easily moved from one site to the next or modified to fit your changing project needs, saving you time and money.





## LUNCHROOMS

Whether it's for 8 or 1,000 people, we have fully equipped lunchrooms available. Lunchrooms can be fitted with a kitchenette featuring a mini-boil, microwave and fridge.

Lunchrooms are secure and built tough for frequent use and constructed using a range of industrial materials that are easy to clean.

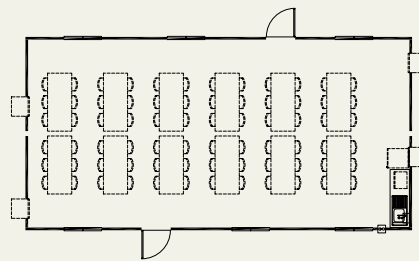
Each lunchroom provides a safe and comfortable place to eat, rest and socialise.

### EXAMPLE

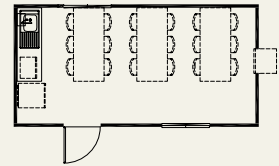
#### Inclusions

- > External metal door
- > Windows (sliding with fly screens)
- > Kitchenette counter
- > Sink and drainer
- > Mini-boil unit
- > Tables and chairs
- > Fridge
- > Microwave
- > Diffused fluoro lights
- > Reverse cycle air conditioning

12.0 x 6.0m



6.0 x 3.0m

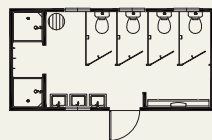


## TOILETS AND ABLUTIONS

Toilets range from single portable toilets to full toilet and shower blocks for male and female in a variety of sizes. Our mix of toilet buildings feature private cubicles, hot water showers, urinals, vanities and disability amenities.

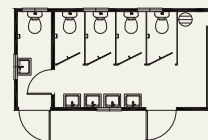
We stock 4,000 and 6,000 litre waste tanks for toilet blocks with pump out services available. We also provide stairs and landing systems, ensuring easy access to toilet blocks stacked on top of waste tanks.

### EXAMPLE



6.0m x 3.0m

- > External metal door
- > Vented windows with flyscreens
- > Toilets dual flush with private cubicle and toilet paper holder
- > Hand basins with mirror
- > Fiberglass shower cubicles with curtains
- > Stainless steel urinal



6.0m x 3.0m

- > External metal door
- > Vented windows with flyscreens
- > Toilets dual flush with private cubicle and toilet paper holder
- > Separate male/female compartment
- > Hand basins with mirror
- > Stainless steel urinal

## CONTAINERS

We have 10ft and 20ft steel containers that can be utilized for site equipment storage, general store rooms, office archive rooms, store surplus retail stock and storage of sports or general equipment.

### EXAMPLE

3.0 x 2.4m



6.0 x 2.4m



### Inclusions

- > Heavy duty steel
- > Secure locking device
- > Pockets for forklift prongs
- > Corner fittings for locking down

## LIVING ACCOMMODATION

Whether it's a large village with central facilities or accommodation for a small site, we have a range of styles and services to suit. Our buildings are built to endure rugged site conditions and frequent use without compromising on comfort and safety – a great environment for your workers to rest.

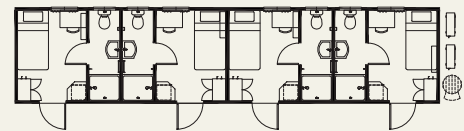


### EXAMPLE

#### Inclusions

- > Quality internal finish
- > Blockout curtains for windows
- > Toilet suite, dual flush, with toilet paper holder
- > Large shower cubicle
- > Vanity unit with mirror
- > Towel rail
- > Exhaust fan
- > Smoke alarm
- > King size single bed
- > Chair
- > TV shelf
- > Writing table
- > Wardrobe (double)
- > Mini fridge (optional)
- > Reverse cycle air conditioning

14.4 x 3.25m



## KITCHENS AND DINING FACILITIES

Commercial kitchens are ready to operate as soon as they're connected. We can help plan the whole hire solution with full kitchens, food preparation areas, serving areas, cold rooms (cooler/freezer), dry storage and dining modules to cater for 20 or 2,000 people.

Our hire fleet includes a large array of commercial quality ancillary equipment including stoves, refrigeration, ovens, rotary ovens, fryers, ice makers and more.

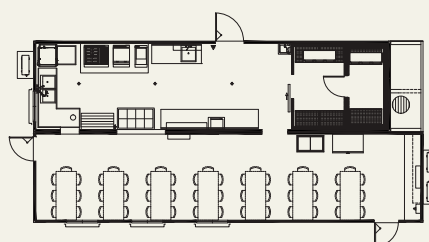


### EXAMPLE

#### Inclusions

- > Cooking and preparation facilities
- > Large fridge/freezer
- > Pot and dish wash areas
- > Vegetable and meat prep
- > Serveries for hot and cold food

14.4m x 6.7m





## CLASSROOMS AND LEARNING CENTRES

Whether you're experiencing fluctuating enrolments, renovations or have an emergency – our hire buildings are available at short notice to provide the perfect learning environment to your specifications.

Each building provides a comfortable learning environment with durable finishes and secure facilities. Optional ancillary items are available including furniture, white boards, pin boards and floor coverings.

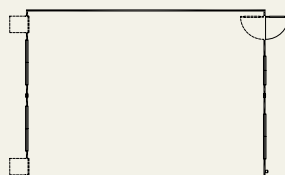
Take advantage of our full turnkey service including transport, install and handover of buildings for immediate use.

### EXAMPLE

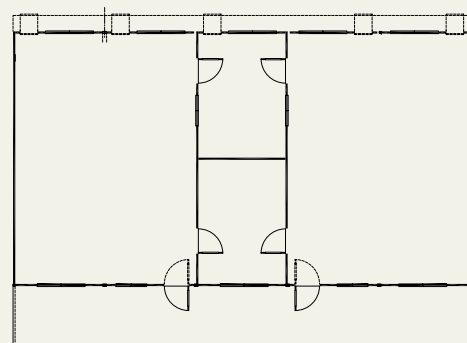
#### Inclusions

- > External solid timber core doors
- > Window view panel
- > Large windows with fly screens
- > Cut-outs for air conditioners
- > Diffused fluoro lights
- > Break out rooms or teachers retreat
- > Built in verandah

9.6 x 6.9m



12.0 x 17.25m



## WHO IS AUSCO MODULAR?

We provide temporary and permanent building solutions using modular technology.

Our product and service offering covers a full range of client needs from a short-term hire of site facilities to the full turnkey delivery of an accommodation village, education facility or commercial office.

- With one of the largest building hire fleets in Australia we can supply anywhere in the country from one of our 16 branches.
- Our manufacturing facilities based in four strategic locations give us reach to all major areas around Australia.
- Our growing network of Stayover by Ausco accommodation villages are located close to key mining, oil and gas hubs to service worker accommodation needs.

With over 50 years experience, we have built up extensive consultancy, design, engineering, onsite construction and project management capabilities which allow us to work closely with customers to deliver the right solutions.

Our local branches deliver fast turnaround on customer orders including the transport and installation of buildings for any application.

## BRANCHES

Call 13 62 11 to be connected to your nearest branch, or email [sales@ausco.com.au](mailto:sales@ausco.com.au).

### QLD

#### BRISBANE (Head Office)

44 Formation Street  
Wacol QLD 4076  
[Ph] 07 3864 7800  
[Fx] 07 3864 7878

#### CAIRNS

87 Buchan Street  
Portsmith QLD 4870  
[Ph] 07 4035 4448  
[Fx] 07 4035 4449

#### GLADSTONE

11-15 Ganley Street  
South Gladstone QLD 4680  
[Ph] 07 4727 5080  
[Fx] 07 4973 9789

#### MACKAY

46-50 Gateway Drive  
Paget QLD 4740  
[Ph] 07 4955 1499  
[Fx] 07 4955 4147

#### TOWNSVILLE

23 Jay Street  
Bohle QLD 4818  
[Ph] 07 4727 5000  
[Fx] 07 4727 5057

### NSW

#### NEWCASTLE

40 Boundary Street  
West Wallsend NSW 2286  
[Ph] 02 4953 1755  
[Fx] 02 4953 3077

#### SYDNEY

Gate 2, 22 Powers Road  
Seven Hills NSW 2147  
[Ph] 02 9624 0888  
[Fx] 02 9838 8097

### ACT

#### CANBERRA

78 Sawmill Circuit  
Hume ACT 2620  
[Ph] 02 6260 1688  
[Fx] 02 6260 1634

### VIC

#### MELBOURNE

3/58-82 Produce Drive  
Dandenong South VIC 3175  
[Ph] 03 8710 0200  
[Fx] 03 8710 0299

### WA

#### KALGOORLIE

Lot 11 Craig Road  
Kalgoorlie WA 6430  
[Ph] 08 9021 3188  
[Fx] 08 9021 4133

#### KARRATHA

Lot 2494 Coolawanyah Road  
Karratha WA 6714  
[Ph] 08 6145 5252

#### PERTH

31 Hallett Street  
Naval Base WA 6165  
[Ph] 08 9333 5100  
[Fx] 08 9333 5111

### SA

#### ADELAIDE

7-11 Sturton Road  
Edinburgh SA 5111  
[Ph] 08 8282 1111  
[Fx] 08 8282 1166

### TAS

#### LAUNCESTON

161 St Leonards Road  
St Leonards TAS 7250  
[Ph] 03 6339 3708  
[Fx] 03 6339 2826

### NT

#### DARWIN

10-14 Verrinder Road  
Berrimah NT 0828  
[Ph] 08 8947 0400  
[Fx] 08 8947 2183